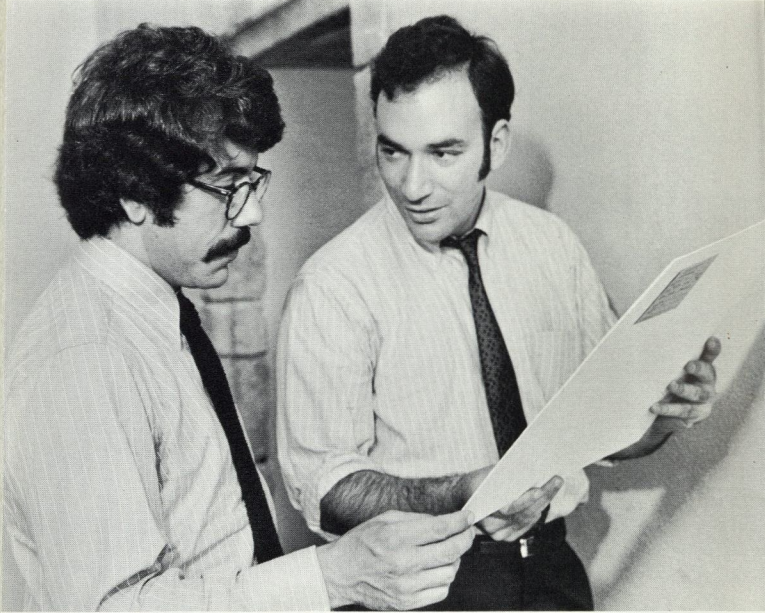


PHILADELPHIA
MUSEUM
OF ART

**The Drawing Society
Second Eastern Central Regional
Drawing Exhibition**

**Philadelphia Museum of Art
June 30 - August 30, 1970**

PHILADELPHIA
MUSEUM OF ART
1970



*Jury for the Regional Drawings Competition:
Renato Danese, left, and Michael Fried*

NC
110.5
D72e
1970
COPY 2 - PR

Foreword

This second drawings competition of the Eastern Central region of the United States is sponsored by the Philadelphia Museum of Art in cooperation with its initiators, the national Drawing Society, 1001 Park Avenue, New York. The Museum has undertaken the organization and cost of the exhibition as a part of its continuing effort to encourage the work of artists living in its area.

In the interest of consistency, specifications for participation in the competition were set by the Drawing Society, as was the definition of a drawing. The latter has of necessity been interpreted freely so as to encompass the expanding media in which artists are working today. Thus a drawing is not always done principally in line, nor is it always executed on paper, though one or the other of these elements is usually present. The artist is free to choose his medium, as he is also free to interpret and decide his own professional eligibility for participation in the competition.

The Eastern Central region is defined as that which includes Delaware, the District of Columbia, Maryland, New Jersey, Pennsylvania, Virginia and West Virginia. From 353 works submitted by 296 artists, 76 drawings were chosen, representing 63 different artists. Ten of these have been selected to be in a national exhibition, which will be circulated by the American Federation of Arts in the fall. Three works recommended by the judges received purchase awards and will become part of the Museum's permanent collection.

The Drawing Society has expressed the wish to encourage by means of the competition the work of young artists. While no attempt is made to include or exclude any age group—new ideas should be heard, no matter from what source—the decisions of the jury have tended to be in accord with this wish. Perhaps because of their growing number, there is a decided tendency for younger artists to submit to the competition. This is reflected in the character of the exhibition.

The jury consisted of Michael Fried, contributing editor of *Artforum* and Assistant Professor of Fine Arts at Harvard, and Renato Danese, Curator of Contemporary Art at the Corcoran Gallery in Washington. Miss Felice Stampfle was unfortunately unable to serve because of illness. The enthusiastic work of the jurors contributed greatly to the success of the exhibition, as have all the artists who entered the competition. The participation of all is hereby gratefully acknowledged.

May Davis Hill
Assistant Curator for Drawings

Catalogue

JUDITH C. AUSTIN Pennsylvania

1. EAGLES MERE. 1970 Pencil and charcoal on paper, 21-1/2 x 29-3/4

E. BEARDSLEY Pennsylvania

2. DRAWING FOR PEACE CASES. 1970 Collage on paper, 14 x 17. Signed

VIVIAN BERGENFELD Pennsylvania

3. MR. MAX. 1970 Mixed media on paper, 28-1/8 x 39-13/16. Signed

JACK BOUL Maryland

4. CITY ROOFS. 1969 Charcoal on paper, 18-1/8 x 24. Signed

WILLIAM CHRISTENBERRY District of Columbia

5. ADVERTISEMENT. 1967 Pencil on paper, 19-3/4 x 15

GUY CIARCIA New Jersey

6. WALL. 1969 Water color on paper, 12 x 9. Signed

MICHAEL CLARK District of Columbia

- *7. 1950 WINDOW. 1970 Graphite on paper, 18 x 19-15/16. Signed and dated

First Purchase Prize

8. NOT FADE AWAY. 1970 Graphite on paper, 24 x 19
Signed

HERMAN COHEN Pennsylvania

9. 1970-180. Ink on paper, 9 x 9-1/8 (sight).

JOHN CORNISH New Jersey

10. LANDSCAPE FRAGMENTS. 1970 Pencil and ink on paper, 14-13/16 x 22-1/4. Signed

RICHARD CRAMER Pennsylvania

11. TUX. 1970 Pencil on paper, 16-3/4 x 20. Signed

DOUGLAS DAFFIN Pennsylvania

12. TOHICKON. 1970 Graphite, tape, pastel, water color, acrylic resin on paper, 29-15/16 x 22-3/8

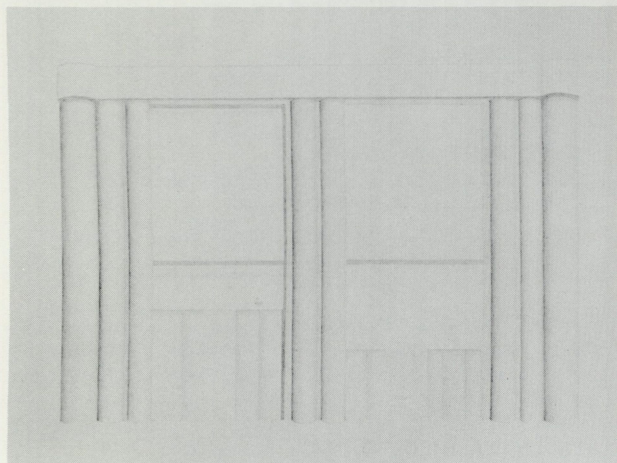
FRED DANZIGER Pennsylvania

13. RUN RABBIT, RUN. 1970 Pencil on paper, 19-3/8 x 19-7/8. Signed

JOAN DANZIGER District of Columbia

- *14. HAPPENING. 1970 Pen and ink on paper, 22-1/2 x 30-1/4. Signed

**Selected for National Drawing Exhibition*



Michael Clark, 1950 Window. First Purchase Award

LEO J. DEE New Jersey

15. LEMON. 1970 Silverpoint on paper, 16-1/2 x 12-3/4. Signed

BERNICE L. DREIFUS Pennsylvania

16. ENVIRONMENT. 1969 Pen and ink on paper, 18-1/4 x 23-1/4 (sight). Signed

JANE SPERRY EISENSTAT New Jersey

17. MAN RESTING. 1970 Ink, wash and pencil on paper, 19 x 28 (sight). Signed

JOHN FORMICOLA Pennsylvania

18. RECTANGLE. 1970 Pencil and ink on paper, 24-1/8 x 19-1/8. Signed

KAYE FREEMAN Pennsylvania

19. RETIFORM NO. 2. 1968 Tape drawing on plexiglas, 20 x 22

HILDA FRIEDMAN Pennsylvania

20. STILL LIFE AND SPACES. 1969 Ink on paper, 21-7/16 x 13-1/2 (sight). Signed

TOM GAUGHAN Pennsylvania

21. DRAWING 1. 1970 Ink on paper, 35 x 22 L.2. Signed
- *22. DRAWING 2. 1970 Ink on paper, 25 x 19. Signed

DIANE GOODMAN Pennsylvania

- *23. SWIMMERS—STUDY. 1970 Asphaltum on paper,
22-5/8 x 26-1/8. Signed and dated

EMANUEL HALLER New Jersey

24. PAUL AND ME. 1960 Pencil on paper,
14-1/16 x 11-1/16. Signed

BETTY HART New Jersey

25. SAM'S DOMAIN. 1970 Pencil on paper,
13-1/2 x 17-1/2 (sight). Signed
26. TRASH OR TREASURE. 1970 Pencil on paper,
13-7/16 x 19-11/16 (sight).

JAMES HAVARD Pennsylvania

- *27. HARRIS COUNTY. 1970 Pencil and pastel on
dacron, 34-3/8 x 37

Third Purchase Prize

WILLIAM A. HILDEBRANDT Pennsylvania

28. ABSTRACTIVITY. 1970 Water color and wash
on paper, 22 x 16 (sight). Signed

CLAIRE IDT Pennsylvania

- *29. EGG HOUSE. 1970 Pastel on paper, 24-1/2 x 20-1/4

VALERIE G. JESRALY Pennsylvania

30. PLANT I. 1970 Craypas and pencil on paper,
6 x 5-3/4 (sight). Signed

L. M. JOHNSON Pennsylvania

31. CONSTRUCTION. 1970 Pencil, spray on paper,
19-3/4 x 26. Signed

MARTIN F. KAELIN Pennsylvania

32. STREET. 1968 Opaque water color and crayon
on paper, 19-1/16 x 25-1/8. Signed

BERNARD KOHN Pennsylvania

33. DRAWINGS FOR THE CREATION (to text music of
Vincent Persichetti) Crayon, gouache and ink on
black paper, seven sheets, 12 x 8-7/8. Signed

FRAN LEIGHT Maryland

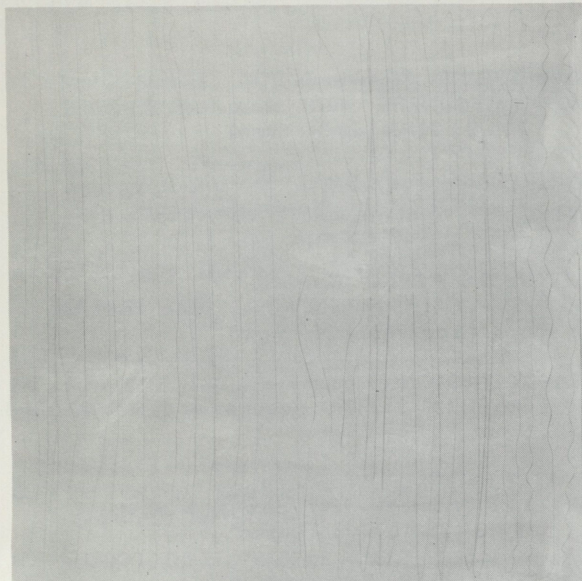
34. THROUGH THE AIR. 1969 Acrylic wash spray on
paper, 15-5/8 x 20-1/4 (sight). Signed

JUDITH A. LYONS Pennsylvania

35. AERIAL. 1970 Pencil on paper, 11-1/2 x 17-1/2
(sight). Signed

NOEL MAHAFFEY Pennsylvania

36. PARK BENCH. 1970 Pencil on white cardboard,
28-1/16 x 28-1/16



James Harvard, Harris County. Third Purchase Award

SAMUEL MAITIN Pennsylvania

37. JASPER JOHNS NO. 2. 1970 Collage and ink on
silver paper, 31-1/2 x 23-1/4. Signed

PAUL M. MINTZ Maryland

38. NUMBER ONE. 1970 Conte crayon on paper,
30 x 22. Signed

REE MORTON Pennsylvania

39. UNTITLED. 1968 Pencil on paper, 18-1/2 x 14-1/8
40. UNTITLED. 1970 Paper, elastic, staples,
paint on paper, 16-15/16 x 22

HELEN O'BRIEN Virginia

41. LOBSTER. 1969 Sumi ink on paper,
16-1/2 x 22-1/2. Signed
42. SENORA. 1967 Sumi ink on paper,
16-1/2 x 22-1/2

WILLIAM OMWAKE Pennsylvania

43. TAWDRY SLANT. 1970 Water color and plastic
on cardboard, 20-7/8 x 29-15/16

ELIZABETH OSBORNE Pennsylvania

44. STUDY FOR ODYSSEY. 1970 Ink and pencil on paper,
20-7/16 x 26-1/2 (sight). Signed

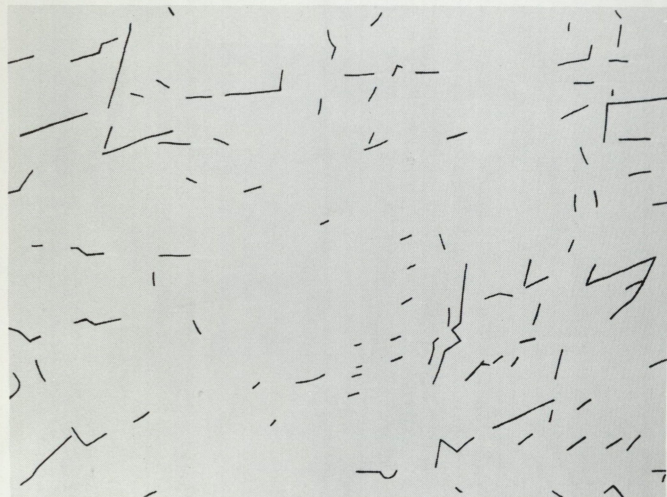
ROBERT PAIGE Pennsylvania

45. LYNNY. 1970 Pencil on paper, 11-7/16 x 9-7/16 (sight)

- DAVID PEASE** Pennsylvania
46. **BUSY MINERS.** 1970 Mixed media on paper, 24-1/8 x 21-1/4 (sight). Signed
- JULIE PEASE** Pennsylvania
47. **PLAYPEN.** 1970 Mixed media on paper, 23 x 29. Signed
- LEONARD C. PIERRO** New Jersey
48. **PROPOSAL: SKYPIECE NO. 1.** 1970 Pencil, ink, paint on paper, 36 x 24. Signed
- MAGGY PRESTON** Pennsylvania
49. **GLYPH NO. 3.** 1970 Ink on paper, 17-3/8 x 25 (sight). Signed
- WALTER REINSEL** Pennsylvania
50. **BIRD OF PREY.** 1967 Sumi ink on paper, 19-7/8 x 25-7/8 (sight). Signed
- WARREN ROHRER** Pennsylvania
51. **ROSE 46.** 1970 Pencil and pastel on paper, 23-1/4 x 17-15/16. Signed
- IRENE VICTORIA ROUSSEAU** New Jersey
52. **CADENCE** Drawing inks on paper, 33-3/4 x 29-7/8 (sight)
- ITZHAK SANKOWSKY** Pennsylvania
53. **JOB AND HIS FRIENDS.** 1970 Litho crayon on paper, 31-1/2 x 19-3/4 (sight). Signed
54. **NUDES.** 1965 Sumi wash on paper, 21-5/8 x 29-3/4 (sight). Signed
- BELLA SCHWARTZ** District of Columbia
55. **UNTITLED.** 1970 Japanese ink on paper, 8-1/2 x 11-9/16 (sight). Signed
- CAROL SEITCHIK** Pennsylvania
56. **ORGANIC MAN.** 1970 Gouache and collage on paper, 27 x 21-3/8 (sight). Signed
57. **MAZE FORM.** 1970 Charcoal and mixed media on paper, 28-5/8 x 22-5/8. Signed
- ROBERT SINGLETARY** Virginia
*58. **IMAGE REPORTER.** 1969 India ink on paper, 22 x 29-7/8. Signed and dated
Second Purchase Prize
59. **F/STOP.** 1970 Pencil on paper, 22 x 29-7/8 (sight). Signed
- JESSE SOIFER** Pennsylvania
*60. **ENCOUNTER.** 1970 Pen, ink and ink wash on paper, 18 x 23-13/16
61. **SHADE SERIES.** 1970 Pen, ink, ink wash on paper, 15 x 21-15/16
- BEN SOLOWEY** Pennsylvania
62. **WINTER LANDSCAPE WITH STARLINGS.** 1968 Brush, pen and ink and wash on paper, 30-1/2 x 24-3/4. Signed
- AARON SOPHER** Maryland
63. **BEACH.** 1969 Pen and wash on paper, 9 x 13. Signed
- MERLE SPANDORFER** Pennsylvania
64. **COBWEB E ARRAY** 1970 Pen and ink on paper, 39-7/8 x 29-11/16. Signed
- CHRIS SUBLETT** Pennsylvania
65. **2 PIT DOGS.** 1970 Ink, acrylic, enamel on paper, 29-1/4 x 22 (sight). Signed
66. **4 DOGS AND BLACK BALL.** 1969. Ink, acrylic and enamel on paper, 20 x 25-5/8
- G. NOBLE WAGNER** Pennsylvania
67. **FLIGHT.** 1970 Ink on paper, 29-3/8 x 21
68. **CURVES.** 1970 Ink on paper, 29-1/4 x 21
- ROSWELL WEIDNER** Pennsylvania
69. **HILLSIDE.** 1966 Charcoal on paper, 34-5/8 x 46-1/2 (sight). Signed
70. **THE FIELD.** 1968 Charcoal on paper, 34-5/8 x 46-1/2 (sight). Signed
- ELAINE WEINSTONE** Pennsylvania
71. **OCEAN.** 1970 Pencil on paper, 18-1/4 x 21. Signed
- DONALD WERDEN** New Jersey
72. **CHANCELLORSVILLE.** 1970 Silverpoint on paper, 12-1/16 x 15-3/16. Signed
- HANK WIDMAIER** Pennsylvania
*73. **ROADSIDE ROCKET.** 1970 Pencil on paper, 8-1/16 x 9-3/8
- WINNI** Maryland
74. **SENTINEL.** Graphite on paper, 32-3/8 x 17-1/2 (sight). Signed
- JOHN WINSLOW** District of Columbia
75. **FAMILY GROUP I.** 1970 Charcoal pencil on paper, 29-1/2 x 24-15/16 (sight). Signed
- *76. **FAMILY GROUP II.** 1970 Charcoal and pencil on paper, 30 x 29-3/4. Signed and dated

Directory of Artists

Austin, Judith C., 1818 Spruce St., Philadelphia, Pa.
Beardsley, E., 2527 Aspen St., Philadelphia, Pa.
Bergenfeld, Vivian, 1203 Greenhill Rd., Flourtown, Pa.
Boul, Jack, 613 Gist Ave., Silver Spring, Md.
Christenberry, William, 1840 Mintwood Pl., N.W., Washington, D.C.
Ciarcia, Guy, 89 E. Prospect St., Hopewell, N.J.
Clark, Michael, 802 F St., N.W., Suite 205, Washington, D.C.
Cohen, Herman, 388 Westfield Dr., Broomall, Pa.
Cornish, John, 9 Marston Pl., Glen Ridge, N.J.
Cramer, Richard, 39 N. 10th St., Philadelphia, Pa.
Daffin, Douglas, 926 Spruce St., Philadelphia, Pa.
Danziger, Fred, 2020 Walnut St., Philadelphia, Pa.
Danziger, Joan, 2306 Tracy Pl., N.W., Washington, D.C.
Dee, Leo J., 38 Ridgewood Terrace, Maplewood, N.J.
Dreifus, Bernice L., 1405 Delphine Rd., Philadelphia, Pa.
Eisenstat, Jane Sperry, 438 Camden Ave., Moorestown, N.J.
Formicola, John, 707 Federal St., Philadelphia, Pa.
Freeman, Kaye, 333 Bent Rd., Wyncote, Pa.
Friedman, Hilda, 15 Rolling Rd., Philadelphia, Pa.
Gaughan, Tom, 916 Cherry St., Philadelphia, Pa.
Goodman, Diane, 7811 Mill Rd., Elkins Park, Pa.
Haller, Emanuel, 121 Greenbrook Rd., North Plainfield, N.J.
Hart, Betty, 60 Little Silver Point Rd., Little Silver, N.J.
Havard, James, 2527 Aspen St., Philadelphia, Pa.
Hildebrandt, William A., 417 Turner Rd., Media, Pa.
Idt, Claire, 563 Livezey St., Philadelphia, Pa.
Jesraly, Valerie G., 2021 Chancellor St., Philadelphia, Pa.
Johnson, L.M., 29 South 19th St., Philadelphia, Pa.
Kaelin, Martin F., 2519 Aspen St., Philadelphia, Pa.
Kohn, Bernard, 8115 Cedar Rd., Elkins Park, Pa.
Leight, Fran, 9416 Bulls Run Pkwy., Bethesda, Md.
Lyons, Judith A., 4009 Turner St., Allentown, Pa.
Mahaffey, Noel, 2526 Aspen St., Philadelphia, Pa.
Maitin, Samuel, 704 Pine St., Philadelphia, Pa.
Mintz, Paul M. 6502 Eberle Dr., Baltimore, Md.
Morton, Ree, 1826 Chelsea, Melrose Park, Pa.
O'Brien, Helen, 3806 Howard St., Annandale, Va.
Omwake, William, 2419 Aspen St., Philadelphia, Pa.
Osborne, Elizabeth, 2200 St. James St., Philadelphia, Pa.
Paige, Robert, 7916 Michener Ave., Philadelphia, Pa.
Pease, David, 611 65th Ave., Philadelphia, Pa.
Pease, Julie, 611 65th Ave., Philadelphia, Pa.
Pierro, Leonard C., 3001 Edwin Ave., Ft. Lee, N.J.
Preston, Maggy, 1600 Staubridge St., Norristown, Pa.
Reinsel, Walter, 2219 Rittenhouse Sq., Philadelphia, Pa.



Robert Singletary, Image Reporter. Second Purchase Award

Rohrer, Warren, Christiana, Pa.
Rousseau, Irene Victoria, 107 Larned Rd., Summit, N.J.
Sankowsky, Itzhak, 217 Upland Rd., Merion, Pa.
Schwartz, Bella, 2222 Eye St., N.W., Washington, D.C.
Seitchik, Carol, 7308 Bryan St., Philadelphia, Pa.
Singletary, Robert, 211 N. Fairfax St., Alexandria, Va.
Soifer, Jesse, 523 S. Orange St., Media, Pa.
Solowey, Ben, Bedminster, Pa.
Sopher, Aaron, 500 W. University Parkway, Baltimore, Md.
Sponsorfer, Merle, 8012 Ellen Lane, Cheltenham, Pa.
Sublett, Chris, 812 Easton Rd., Glenside, Pa.
Wagner, G. Noble, 7955 Waltham Rd., Cheltenham, Pa.
Weidner, Roswell, 612 Spruce St., Philadelphia, Pa.
Weinstone, Elaine, 1325 Edgewood Rd., Havertown, Pa.
Werden, Donald, 41 Main St., Pennington, N.J.
Widmaier, Hank, 2419 Aspen St., Philadelphia, Pa.
Winni, 3513 Anton Farms Rd., Pikesville, Md.
Winslow, John, 1402 4th St., S.W., Washington, D.C.



Tom Gaughan, Drawing